

# We solve your challenge in the field measurement, control and automation technology

m-u-t GmbH – a strong partner for your project



**m·u·t**

MEMBER OF THE NYNOMIC GROUP

Managing directors: Fabian Peters, Axel Witte

Sales volume: > 25 Mio. EUR

Number of employees: abt. 120

Founding: 1995

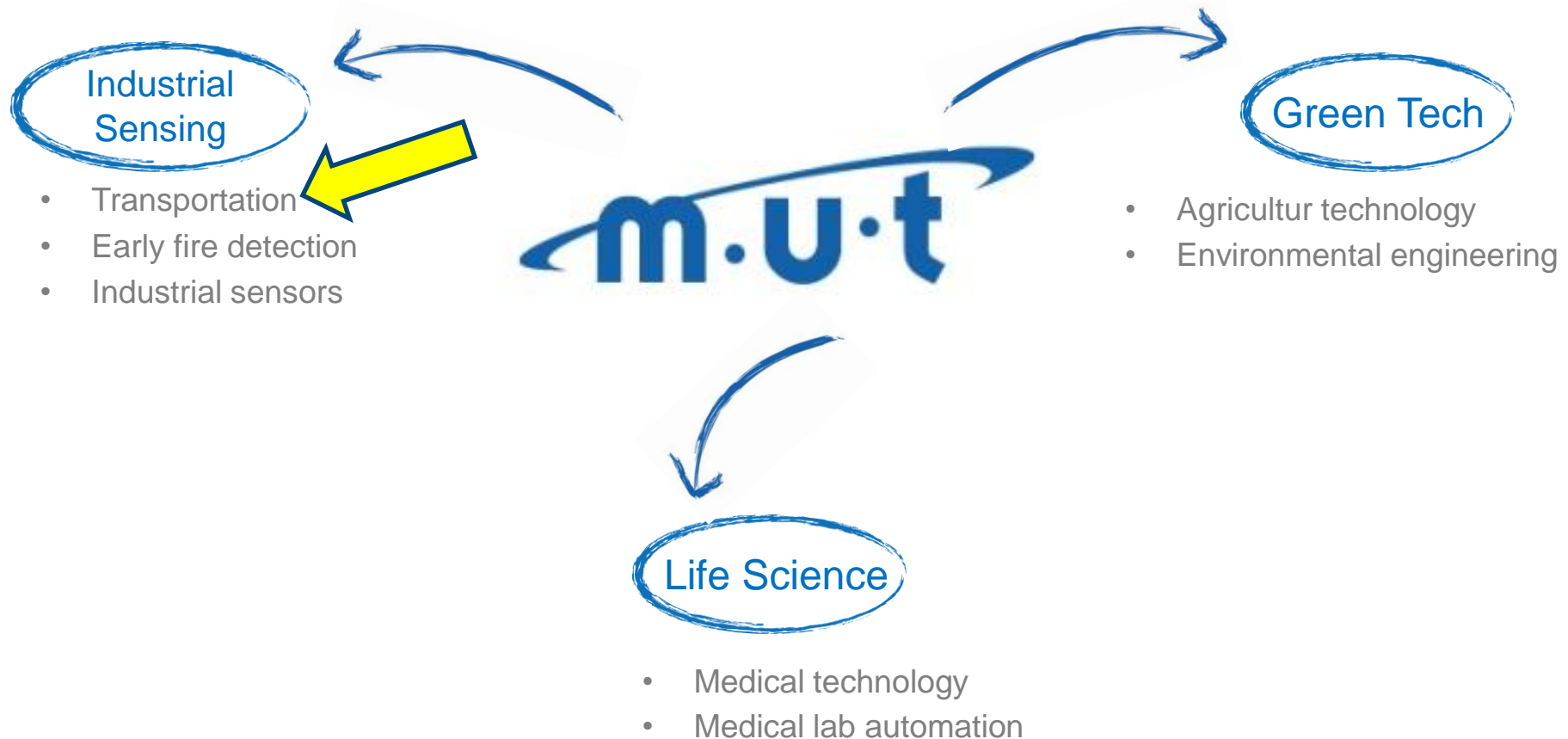
Location: Wedel (bei Hamburg)

Further information: [www.mut-group.com](http://www.mut-group.com)





# Growth markets in the focus of spectrometric measurement technology and automation technology



# Our performance as an OEM partner Not just development and production

## Technology

- The entire spectrum of photonic innovations
- Robotics, automation, control, software
- Component portfolio for laboratory automation

## Production

- Flexible batch-controlled series production based on LEAN and SIX SIGMA principles
- Short production times
- Fast and efficient series transition

## Regulatory Affairs

- Clear product conformity
- Medical devices, in vitro diagnostics
- Automobile, Semiconductor
- Agriculture, Railway, VdS

## Quality

- State-of-the-art quality assurance system
- Separate quality assurance for development, production and logistics
- ISO13485, ISO9001

## Development

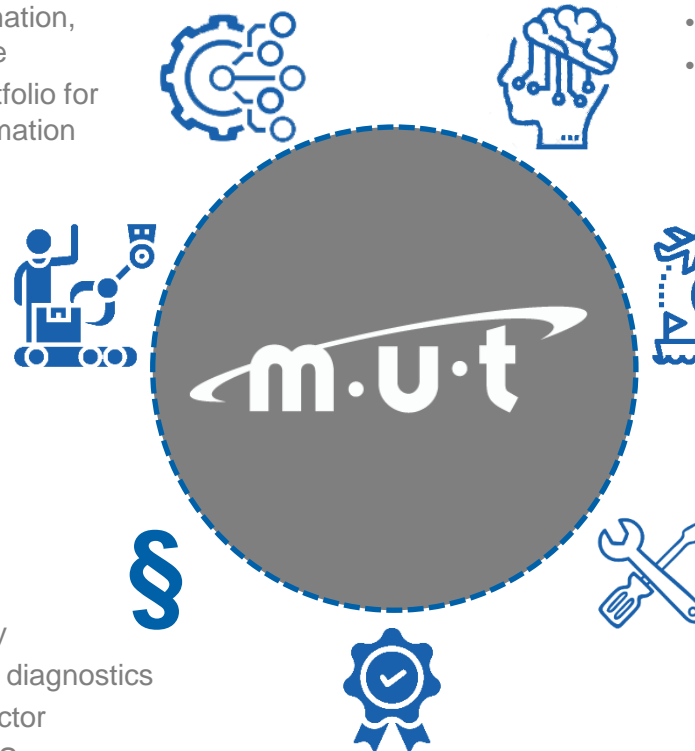
- Creative and agile in concept development
- Efficient in product development
- Life cycle management
- Obsolescence management

## Logistics

- modern ERP system for fast order processing and complete traceability
- warehousing and materials management
- Supplier management and qualification

## Service

- In-house and on-site
- Remote maintenance and telephone support
- All service levels possible
- ESD and separate disinfection area



The Transportation division specializes in **measurement** and **control** technology, as well as **control elements** and **sensors** for use in rail vehicles.



# Four good reasons...

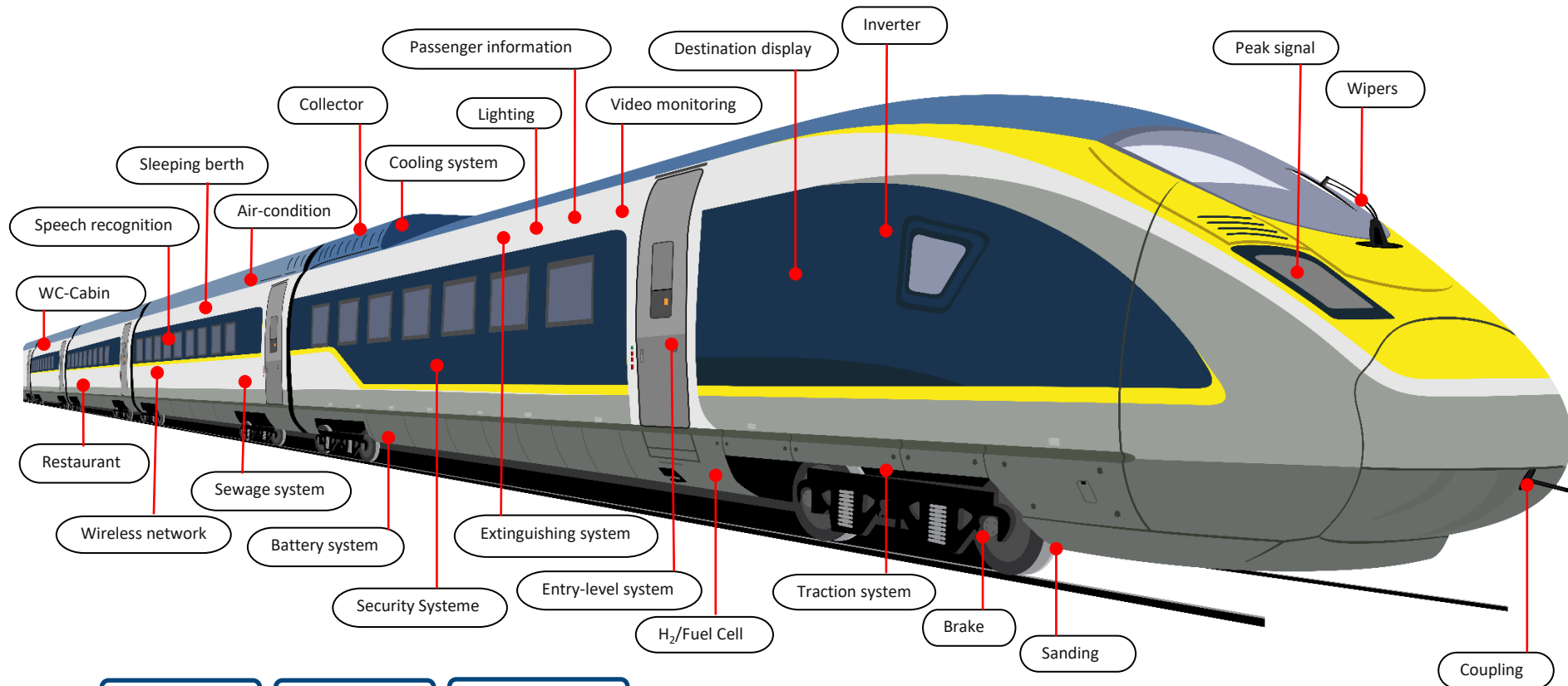
1. Our products are not developed for industrial or commercial applications and then adopted for the railways, **we develop for the railways from the beginning!**
2. **25 years of experience** form the basis for our competence in the planning, development and manufacture of products for use in rail transport.
3. Due to our medium-sized structures, we can respond to **individual customer requests** quickly and flexibly.
4. **Railway-compliant quality at fair prices....**





- Products and product development according to regulatory requirements for rail traffic e.g.
  - EN50155** Electronic equipment on rail vehicles
  - EN45545** Fire protection
  - EN50121-3-2** EMC Electromagnetic compatibility (+ radio communication)
  - EN50128** Software
- Long-term **lifecycle management** (typically 30 years)
- **Develop and manufacture** customer-specific products and systems
- Innovations through **photonics integration** (sensors)
- **Innovations for control boards** using printed circuit boards (PCB) + controls
- All products as OEM goods with **customer branding**

# Custom-fit electronics for your subsystems



- [Controls](#)
- [Control](#)
- [Control Panl.](#)
- [Indicators](#)
- [Sensors](#)
- [Gateways](#)
- [R+D Products](#)



## Controls

- Force-based, non-contact or combination buttons
- proximity sensors
- touch screen
- **## NEW ##** Gesture Recognition
- **## NEW ##** Voice Recognition

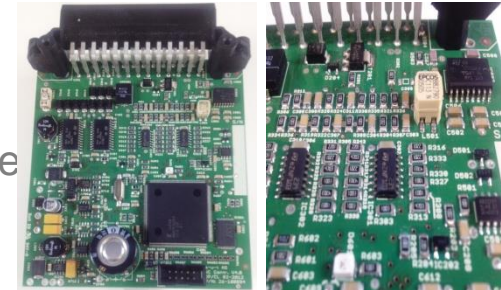
## Displays & Indicators

- LED displays with fixed symbols / opt. vanishing effect
- LCD displays / opt. with touch panel
- VFD displays
- Symbolism, graphic or alphanumeric
- Remote HMI for service personnel
- Optional integrated interfaces RS232, RS485, CAN, Ethernet
- Optional integrated inputs and outputs, digital and analog



### Embedded Controller

- Custom-fit compact controllers with/without housing
- EMC-protected inputs and outputs, digital and analogue
- Process interfaces RS232, RS485, CAN, Ethernet etc.
- Real Time Operating System (RTOS)
- Software solutions according to EN 50128



### PLC: programmable logic controllers

- Custom-fit compact controllers with/without housing
- EMC-protected inputs and outputs, digital and analogue
- Process interfaces CAN, Ethernet etc.
- Membrane keyboard or touch screen
- Linux operating system
- IEC 61131 programming
- Software solutions according to EN 50128
- Integrated in control panel



# Smart Sensors of course railway compliant

## Liquid Level Sensors:

- Liquid Level Control
- Leakage Detection
- Air Bubble Detection

## Concentration measurement:

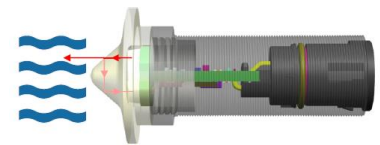
- antifreeze content in water
- AdBlue content
- Fuel type detection
- Oil in water detection

## Hygienic touchless control

- Proximity sensor,
- Gesture sensor,
- Voice recognition & control
- Optical, electrical and acoustic measuring methods



Liquid Level Sensor



Smart universal sensor



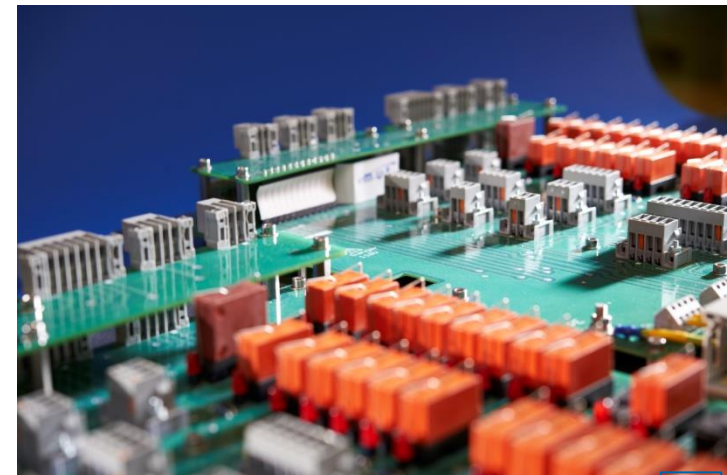
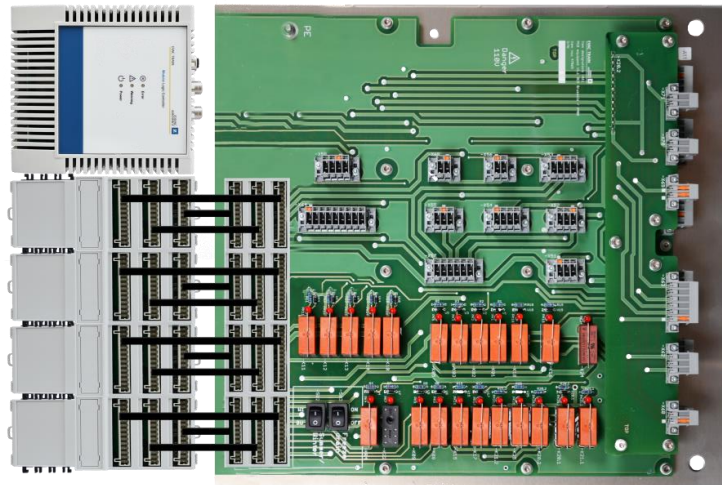
Proximity sensor





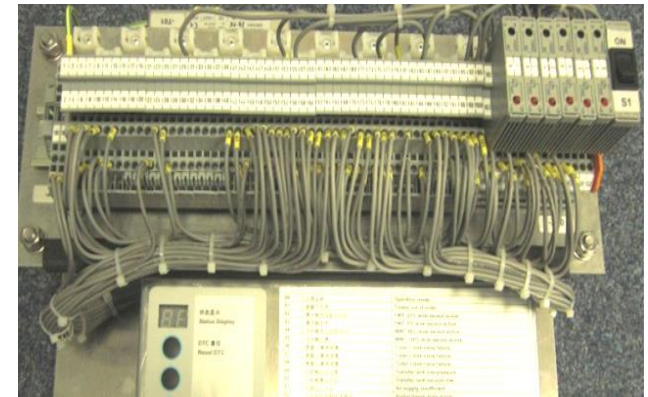
## PLC controls optimized with PCB control panels

- Virtually wiring-free
- Expansion reserve already integrated, e.g. reserve terminals
- Modular & service-friendly hardware concept
- Standardized user software
- Space and weight-optimized installation
- Manufacturing error rate virtually zero (no individual wiring)



## Control panel optimized in Printed circuit board technology (PCB)

- Error-free assembly
- No troubleshooting
- No rework
- Short production cycles, fast deliveries
- High production capacities (>15,000 pieces p.a.)
- Optimized for lean manufacturing
- High quality



control panel in stranded wiring,  
approx. **15h** production time.



control panel in PCB technology,  
approx. **2h** production time

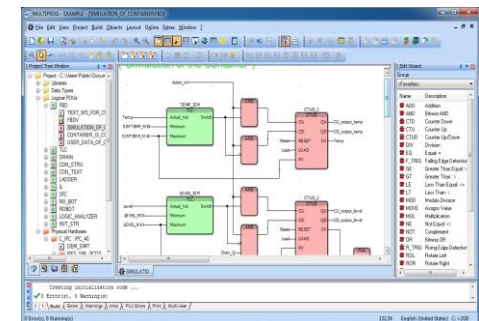


# Train network Protocols Ethernet and CAN

We implement the different network protocols for your controls. In addition, we offer you railway-compliant hardware with protocol translators. All railway-compliant according to EN 50155 and EN 50128.

Examples of implemented protocols:

- IPTCom (Bombardier IPTCom)
- Simple IPTCom (PD data only)
- TComm (Siemens protocol)
- TRDP (Based on TCNopen)
- Hitachi TRDP (Based TCNopen)
- Expert 2 (Siemens protocol)
- UDP
- CANopen
- SCN Smart Cabin Network
- Other: On request



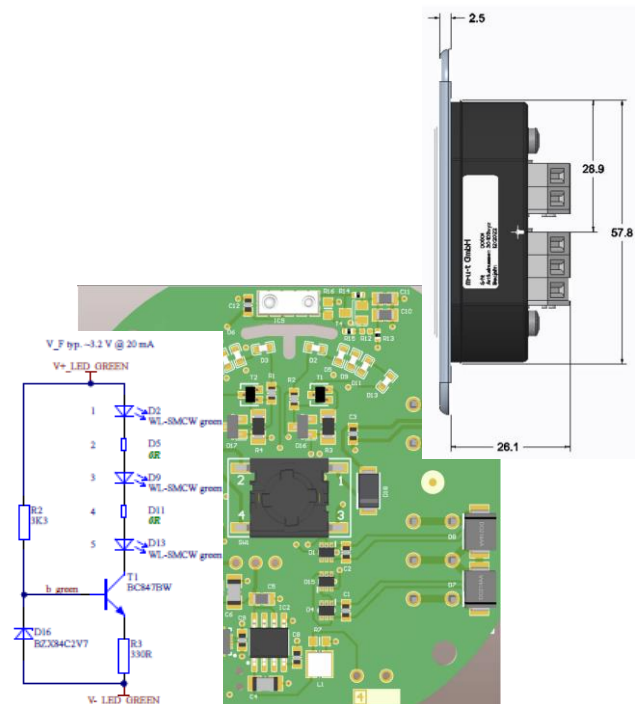


# No compromises: OEM products made to measure

## Do you need a tailor-made electronic solution for your systems?

- We develop and manufacture **tailor-made solutions** for your systems
- Professional **requirements** and **project management** at medical technology level
- Railway compliant from the start: **EN 50155, EN 45545, EN 50128** etc.
- All disciplines by professionals for professionals:  
project management, regulatory requirements,  
**hardware design,**  
**software design,**  
**mechanical design,**  
validation and verification,  
certification, testing, testing equipment
- Series production including **life cycle management**
- Preventive **obsolescence management**
- Sophisticated **change management**
- High quality standards

Everything from a single source:  
That's why our products work right away.



Electronic components were supplied for the following projects:

- Alstom RGV 2N2
- Ansaldo Breda / Hitachi ETR 1000
- Bombardier Talent 2
- CRRC CHR 3
- Kawasaki M-8
- Siemens Velaro RUS
- Siemens Desiro ML
- Siemens Desiro RUS
- Siemens Velaro CN
- Stadler KISS
- Stadler FLIRT
- and much more



Thank you for your attention!



**m.u.t**

MEMBER OF THE NYNOMIC GROUP